

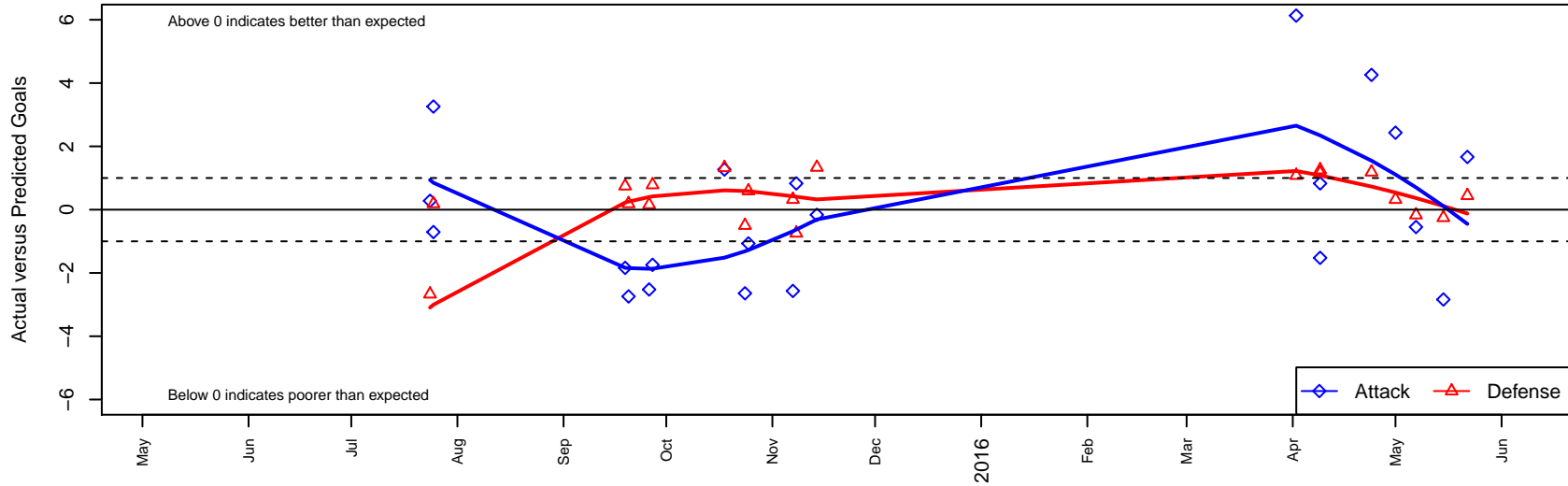
# FC Spokane Black B 2003B

FC Spokane  
 Spokane, WA  
 B03 total strength=600  
 attack=0.74 defense=0.34  
 fall league = PSPL-Inland Div 2 U12  
 spr league = Spr PSPL-Inland Div 2 U12  
 notes= Kennedy-Zettle 2015

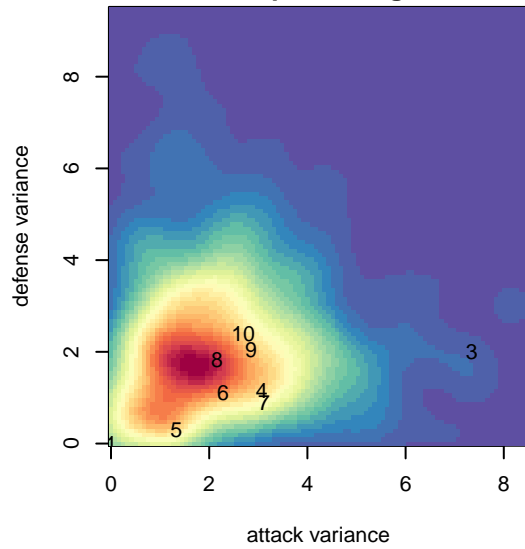
alt names used:  
 FC SPOKANE BLACK-ZETTLE (WA)  
 FC Spokane B03 Black-Zettle  
 FC Spokane B03 Black-Zettle

Venues played:  
 2015 River City Cup U-12 Gold U12  
 2015 PSPL-Inland Div 2 U12  
 2015 Spr PSPL-Inland Div 2 U12

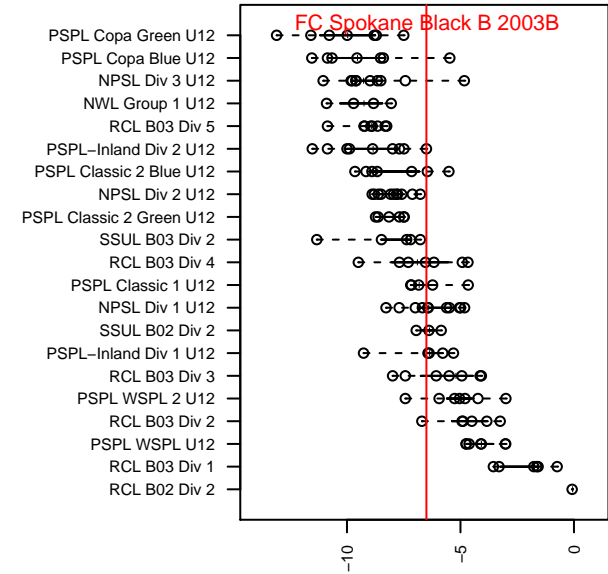
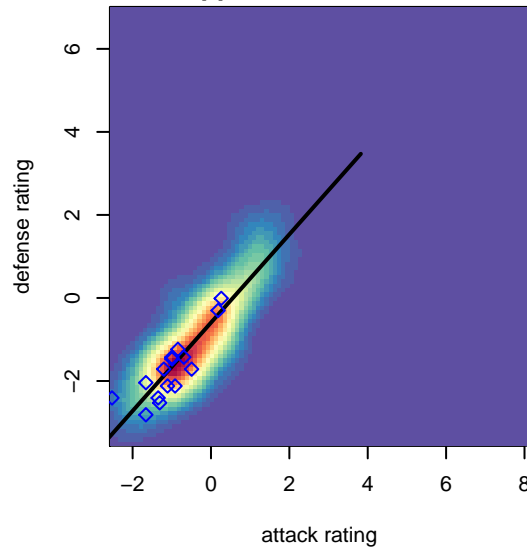
**FC Spokane Black B 2003B**  
 Dots are actual minus expected GF (blue circles) and GA (red triangles).  
 Blue line is smoothed change in attack strength. Red is smoothed change in defense strength.



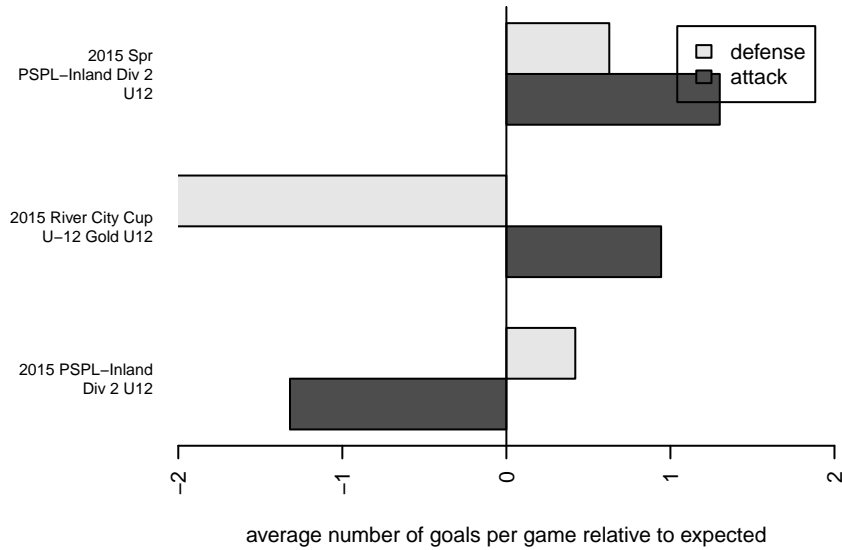
**attack and defense variance (black dot)  
relative to other teams  
and top 10 in region**



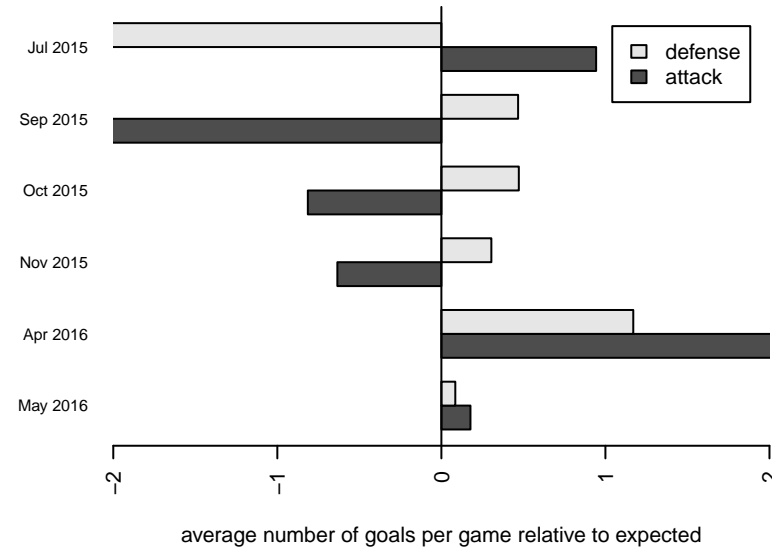
**attack and defense rating  
relative to others at age  
and all opponents in last 13 months**



**Performance relative to 13 month average**



**Performance relative to 13 month average**



date	home		away		venue	pred.home	pred.away
2016-05-22	Pullman Pumas B03	1	FC Spokane Black B 2003B	5	2015 Spr PSPL-Inland Div 2 U12	1.44	3.34
2016-05-15	KVJSA Ellensburg FC B03	2	FC Spokane Black B 2003B	0	2015 Spr PSPL-Inland Div 2 U12	1.75	2.84
2016-05-07	Wenatchee FC Black B04	2	FC Spokane Black B 2003B	2	2015 Spr PSPL-Inland Div 2 U12	1.83	2.55
2016-05-01	FC Spokane Black B 2003B	10	IEYSA Valor Black B03	0	2015 Spr PSPL-Inland Div 2 U12	7.57	0.32
2016-04-24	Academy Idaho Cads B03	0	FC Spokane Black B 2003B	9	2015 Spr PSPL-Inland Div 2 U12	1.19	4.74
2016-04-09	FC Spokane Black B 2003B	6	Cobra Equipo Relampago B03	0	2015 Spr PSPL-Inland Div 2 U12	7.52	1.16
2016-04-09	FC Spokane Black B 2003B	5	Idaho Thunder B03	0	2015 Spr PSPL-Inland Div 2 U12	4.17	1.26
2016-04-02	FC Spokane Black B 2003B	11	Central WA SA White B03	0	2015 Spr PSPL-Inland Div 2 U12	4.87	1.08
2015-11-14	FC Spokane Black B 2003B	3	CB United B03	1	2015 PSPL-Inland Div 2 U12	3.16	2.34
2015-11-08	FC Spokane Black B 2003B	5	Idaho Thunder B03	2	2015 PSPL-Inland Div 2 U12	4.17	1.26
2015-11-07	IEYSA Valor Black B03	0	FC Spokane Black B 2003B	5	2015 PSPL-Inland Div 2 U12	0.32	7.57
2015-10-25	Spokane Scotties Wilmot B03	0	FC Spokane Black B 2003B	10	2015 PSPL-Inland Div 2 U12	0.59	11.07
2015-10-24	IEYSA Storm B03	2	FC Spokane Black B 2003B	3	2015 PSPL-Inland Div 2 U12	1.50	5.64
2015-10-18	FC Spokane Black B 2003B	4	Spokane Pumas Platinum B03	0	2015 PSPL-Inland Div 2 U12	2.73	1.32
2015-09-27	Breakers Red B03	0	FC Spokane Black B 2003B	6	2015 PSPL-Inland Div 2 U12	0.78	7.74
2015-09-26	FC Spokane Black B 2003B	5	Cobra Equipo Relampago B03	1	2015 PSPL-Inland Div 2 U12	7.52	1.16
2015-09-20	FC Spokane Black B 2003B	2	Academy Idaho Cads B03	1	2015 PSPL-Inland Div 2 U12	4.74	1.19
2015-09-19	KVJSA Ellensburg FC B03	1	FC Spokane Black B 2003B	1	2015 PSPL-Inland Div 2 U12	1.75	2.84
2015-07-25	FC Spokane Black B 2003B	0	SSC Shadow A B03	13	2015 River City Cup U-12 Gold U12	0.71	6.26
2015-07-25	FC Spokane Black B 2003B	8	Academy Idaho Cads B03	1	2015 River City Cup U-12 Gold U12	4.74	1.19
2015-07-24	FC Spokane Black B 2003B	1	Washington East SC B03	8	2015 River City Cup U-12 Gold U12	0.72	5.33